

Mange Space

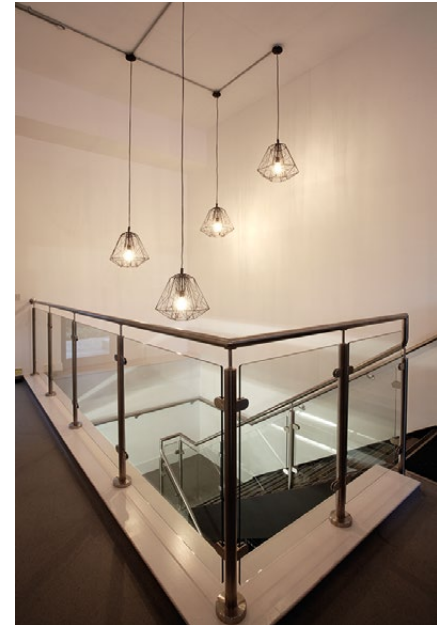


Overview

Situated less than 10 minutes from Old Street and Barbican tubes, Mange offers a new event space and studio in fashionable Clerkenwell; perfect for a range of uses; photographic shoots (particularly food), meetings, presentations, rehearsals, product-launches, press days, receptions, dinners, food & wine tastings. Room for 35 standing and 25 seated for dinners or theatre style presentations.

We are able to meet all of your catering requirements with the benefit of permanent access to our commercial event catering resources in the same building.

With sufficient notice, our state-of-the-art 1,700 sq ft commercial kitchen facility can be made available for photo shoots, commercials, cookery classes and food-related book and product launches where you are able to have a cookery demonstration followed by a tasting in the event space.

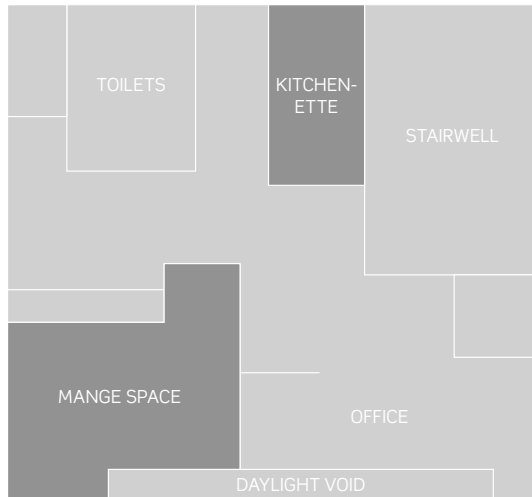




Facilities

- 400ft² daylight studio/event space
- Superb access; secure underground loading and (by arrangement), step free access a few feet from the studio space. Parking on site, or five minutes' walk away for £8.00 per day (outside of congestion zone)
- High ceilings; 13ft
- Natural light; from glass infills and under-shot shooting opportunities
- 3 phase power; with 13 amp domestic sockets
- Dedicated client phone line, printing, copying, fax and conferencing facilities
- 48" Panasonic Smart TV; HDMI laptop connection for Mac/PC. Ideal for screenings, presentations, conference calls & viewing photos
- High Speed WiFi & direct CAT5 broadband connections
- Adjustable lighting; LED strip lights and dimmable squirrel cage bulbs
- Sherwood HiFi system; with wall mounted speakers and iPod dock
- WC; 2x dedicated unisex toilets/changing area & shower
- Reception/chill-out area; sofa, coffee table, refreshments, magazines & newspapers

Floorplan



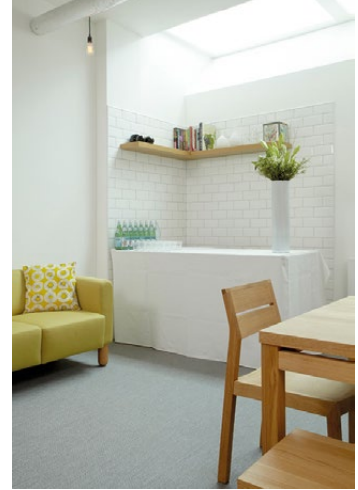
Lower ground floor



Ground floor

Photography Studio

- Wall mounted background supports with expad drive set
- 4x polyboards reflectors: 8ft by 4ft, white front, black back
- Floor to ceiling adjustable auto-poles
- 4x medium to heavy weight stands
- Various table tops; including oak, bright white & stainless
- Vast range of food props; kitchen, dining and decorative, cook books, food & wine reference library
- Kitchenette; with fridge, freezer, convection oven, sink and worktop space, ideal for home economists
- Naked flame action shots; using commercial gas equipment in our production kitchen
- Photographic equipment hire; motion / stills cameras, lighting, colorama & ancillary equipment available at discounted rates from our neighbours www.focus24.tv
- If you require a photographer or stylist for product, stills or food, our resident photographer Rowland Roques-O'Neil or one of his team can assist www.rolympics.com
Also available for art direction & post production, editing and re touching



Events

- On site catering
- Service bar with drinks fridge, variety of spirits, wine, beer & soft drinks, cocktail, coffee & tea equipment. In addition to our listed and stocked drinks, vast range of wines & craft beers available from our suppliers www.libertywine.co.uk & www.biercraft.co.uk for next day delivery
- Tutored wine tastings and team building sessions with David Motion of the www.thewineryuk.com
- Flowers, decorations and theming from renowned florists, and neighbours www.mcqueens.co.uk
- Facade branding and large scale projections in entrance stairwell & glazed partitions
- Complimentary use of poseur, café & trestles tables, lanterns, candles, vases and much more subject to availability. Additional furniture, catering equipment & props can be hired on a same day delivery from one of our suppliers. Prices on request



Additional Services

Onsite catering + more

Stylish, innovative food and imaginative event design since 1993.

Mange has been providing stylish, innovative food and imaginative event design for 20 years. Having catered for thousands of events, from cocktail parties to gala dinners, press days to conferences, intimate private soirees to elaborate weddings, Mange has forged a reputation for personal, professional and exceptional service.

We are happy to simply offer advice or even take care of things for you from inception to completion. Mange has long standing relationships with trusted suppliers in all aspects of event design and production. We also operate a daily lunch service so can provide delicious food for your team, minimum orders may apply.

Contact us for bespoke menus and prices including working breakfasts, lunch & tea, canapés, bowl food, buffet, dinners, wine, cocktails and much more...



Rates*

Item	Editorial shoots or rehearsals	Advertising shoots, meetings or events
Half day ¹	£250	£300
Full day ²	£350	£450
Full week ³	£1,600	£2,000
Saturdays	£450	£575
Sundays and Bank Holidays	£550	£675
Overtime per hour [08:00-09:00 & 18:00-19:00]	£40	£40
Overtime per hour [06:00-08:00 & 19:00-23:00]	£60	£60
Overtime per hour [23:00-06:00]	£100	£100
Commercial kitchen/entire building hire	POA	POA
Photographer Half Day (incl. studio rental)	£550	£575
Photographer Full Day (incl. studio rental)	£850	£925
Security per hour (min. 4hrs)	-	£30
Event Manager/Host/Hostess per hour (min. 4hrs)	-	£30
Cleaning per hour (1hr included for photography; 2hrs for events)	£20	£20
Stylists, post production and retouching	POA	POA
Waiting, bar, cocktail staff, DJs & event technicians	POA	POA

* All rates shown are subject to VAT

1 Half day; 09:00-14:00 or 14:00-18:00

2 Full day; 09:00 - 18:00

3 Full week Mon - Fri

Location

Mange Space
61 Central Street
London
EC1V 3AF

T 020 7608 1222
E space@mange.co.uk
W www.mange.co.uk/mangespace



The Mange Tasting Room is a great setting for an intimate lunch or dinner and ideally located. Our clients were delighted to find their way to the room via the immaculate kitchens—the space itself is well furnished and bathed in natural light during the day.

Everything we needed was on hand, and the capacity to discreetly unload and pack away via the loading area at the back was a real bonus.

Clive Greenhalgh, Demi Sec Ltd



With underground loading and access and Focus 24—a great camera hire facility—literally next door, the new Mange Space studio is extremely practical. Access to Mange's catering props, coupled with natural light and high ceilings, makes it a great place to shoot, especially food.

Having the option to use their sparkling, commercial kitchen (with gas flames) is also fantastic. The team at Mange are extremely welcoming, helpful and friendly—I've thoroughly enjoyed my first few shoots there.

**Rowland-Roques-O'Neil
Photography**

Mange
Space